

INFORMATION ! INCLUDING CHANGES !



EVENT NAME

Brněnské bergle 2016

COMPETITIONS

Czech Open ARDF Championship in short track **3,5 MHz**

Classic ARDF competition 3,5 MHz

Both competitions are part of Czech national ranking and Slovak national ranking.

DATE, VENUE AND CENTRE OF THE EVENT

May 6–8, 2016, Bílovice nad Svitavou, northeast of Brno, Czech republic

School Bílovice nad Svitavou, Komenského 151, near railway station

GPS: 49.2448714 N, 16.6734736 E

ORGANIZER, ORGANIZING COMMITTEE

SK RADIOSPORT Bílovice nad Svitavou, Czech ARDF Association

Event director: Alexandra Látalová

Chairman of the Jury: Miroslav Látal, OK2LMX

Technical director: Jiří Mareček, OK2BWN

Siting referees: Petr Matula (R1), Miroslav Látal (R1)

TIME SCHEDULE

Friday, May 6	18:00–22:00	registration
	20:00–22:00	training on both bands
Saturday, May 7	10:30	start – classic 3,5 MHz
	19:30	awarding ceremony – classic 3,5 MHz
Sunday, May 8	09:30	start – short track 3,5 MHz
	14:30	awarding ceremony – short track 3,5 MHz

CATEGORIES

D12, D14, D16, D19, D20, D35, D50, D60

M12, M14, M16, M19, M20, M40, M50, M60, M70

TERRAIN

Hilly, with dense network of paths, numerous valleys with creeks.

Dense undergrowth, covering of legs is recommended.

MAPS

Standard IOF, status spring 2016.

Scale 1 : 15 000 (classic), 1 : 10 000 (short track).

EMBARGOED AREA

Area between Brno-Lesná, Soběšice, Útěchov, Vranov, Lelekovice, Brno-Řečkovice.

TRANSPORTATION TO THE COMPETITION AREA

From the event centre by the shuttle bus of the organizer.

TRANSMITTERS

See Technical data in the Download section.

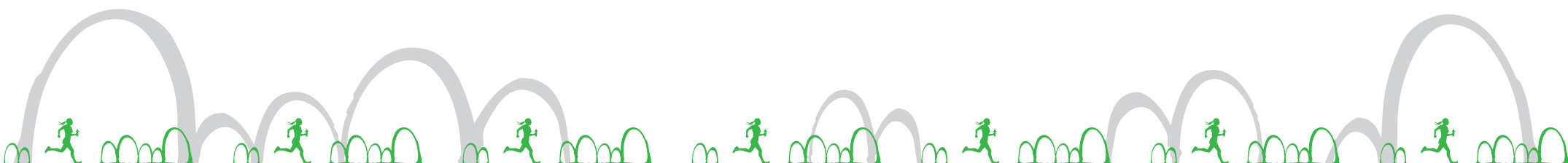
REGISTERING DEVICE

SportIdent for both competitions.

ACCOMMODATION

In your own sleeping bag in the school gym. Showers and toilets are provided.

Slippers required!



INFORMATION



BOARD

Provided in the school canteen.

Saturday	BREAKFAST	buffet
	DINNER	Vegetable soup / Meet cream soup Beef goulash with dumplings, tea
Sunday	BREAKFAST	buffet
	LUNCH	Cabbage soup / Beef broth with liver dumplings Roasted chicken thigh, rice, salad, tea

PRICES

		ENTRY	
		till April 25	after April 25
Starting fee	MD16 and younger	120 CZK	150 CZK
	MD19 a older	160 CZK	200 CZK
Accommodations	per person and day	65 CZK	
Board	breakfast	60 CZK	not guaranteed
	dinner/lunch	75 CZK	not guaranteed
SI card rental	for one race	20 CZK	
	in the case of loss	800 CZK	

ENTRIES DEADLINE

April 25, 2016, by e-mail to mlatal@post.cz, you should receive confirmation within 3 days, otherwise the entry is not accepted.

Please use our entry form, which is available in the Download section.

All fees shall be paid by this deadline to the bank account

IBAN: CZ152010000002300720703, BIC/SWIFT: FIOBCZPPXXX

Competitors participate at their own risk.

INFORMATION

You will get following information and details at the event website:

www.skradiosport.cz/bergle2016

CONTACTS

If you have any question, please contact us:

Jiří Mareček, OK2BWN

mobile: +420 602 531 222

e-mail: marecek@ok2bwn.cz

The SK RADIOSPORT organizing team is looking forward to your participation.

