



CZECH RADIO CLUB (CRC)
member of the International Amateur Radio Union



CZECH ARDF Association

Bulletin No. 2

EYAC

2013



14th European / IARU region 1 Youth ARDF Championship
June 12 - June 16, 2013
Tři Studně, Czech Republic



Dear sportsmen,

The 14th European Region 1 Youth ARDF Championships begins in less than five months. We thank all those who sent us a letter of intent. Bulletin No. 2, which you are reading right now, is bringing you further useful information about the upcoming event.

In 2000, the tradition of international youth ARDF championships began in Kroměříž. We are proud that the Czech Republic will again welcome the best of ARDF youths. We have received letters of intent from following countries: Bulgaria, Croatia, Czech Republic, Germany, Lithuania, Poland, Russia, Slovakia, Slovenia, and Ukraine. Altogether, we expect about a hundred competitors.

New discipline – sprint – will be introduced in this year's championship. It is already a regular part of senior championships and we hope it will succeed at youth championships as well. Sprint is welcomed especially for its different character from the regular course. Both skilled competitors and also those without sufficient endurance but having quality for fast race, quick decision, and especially thorough mastering of their receivers can shine in this course. In order to make this competition as fair as possible, we will organize full scope training.

We are working hard to make your stay most pleasant and successful. We wish all sportsmen a successful entry into a new season and we are fond of meeting you at Tři Studně in June 2013.

Pavel Mikšík

Chairman of the organizing committee

Organizer:

Czech ARDF Association on behalf of the Czech Radio Club (CRC).

Venue:

Tři Studně (altitude 720 m) is a commune nearby Nové Město na Moravě, where world cups in cross-country ski, biathlon, and mountain bike take place annually. This area attracts tourists as well as active sportsmen. This region occupies high, undulating territory in the middle of the Czech Republic between the two largest Czech cities – Prague and Brno. This wonderful country is characterized by a mosaic of forests, grazing land, meadows, and lakes.

Event center:

Hotel Horník, Tři studně, (49°36'24.141"N, 16°2'4.599"E)

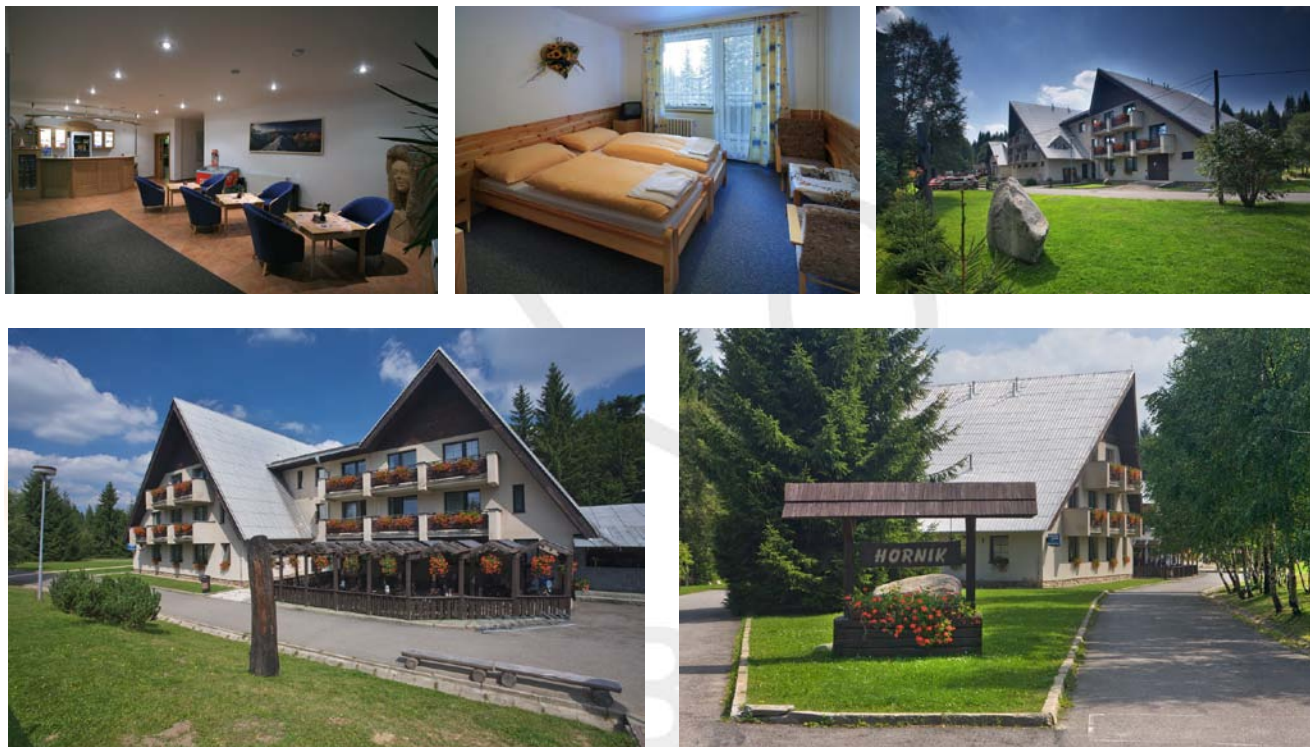
Directions:

The commune of Tři Studně is located about 40 km away from Prague–Brno highway, the distance from Prague is about 180 km, from Brno about 90 km, from Vienna about 220 km. The nearest international airports are in Prague and Vienna.

Accommodation:

Hotel type (in two hotels about 800 m apart), 2–5 bed rooms, full board (same menu for both localities). Accommodation and board costs are part of the participant's fees.

Hotel Horník (49°36'24.141"N, 16°2'4.599"E)



Pension Horácko (49°36'41.598"N, 16°2'5.338"E)



Schedule:

Wednesday, June 12, 2013:

- arrival,
- training on both bands (for standard courses),
- official opening ceremony.

Thursday, June 13, 2013:

- 144 MHz competition,
- sprint training,
- awarding ceremony.

Friday, June 14, 2013:

- sprint 3.5 MHz competition,
- awarding ceremony.

Saturday, June 15, 2013:

- 3.5 MHz competition,
- awarding ceremony,
- closing party & hamfest.

Sunday, June 16, 2013:

- departure.



Competition rules:

Rules for Championships in Amateur Radio Direction Finding for IARU Region 1 apply:
Part A – Organisation, version 2.8 (valid since 2009),
Part B – Competition, version 2.11 (valid since 2013) –includes rules for Sprint.

Categories:

Category M16:

Men (boys) up to 16 (i.e., born 1997+); team consists of up to five competitors.

Category W16:

Women (girls) up to 16 (i.e., born 1997+); team consists of up to five competitors.

Category M14:

Men (boys) up to 14 (i.e., born 1999+); team consists of up to five competitors.

Category W14:

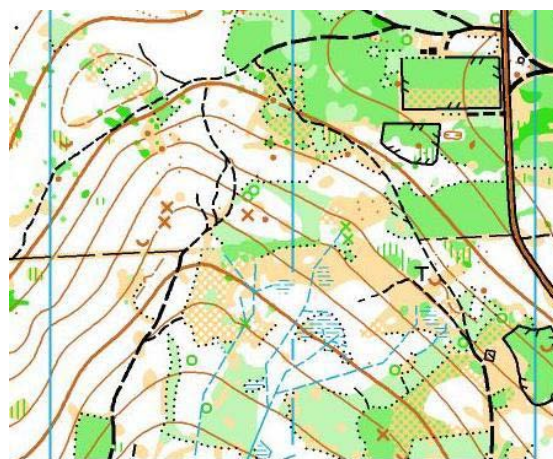
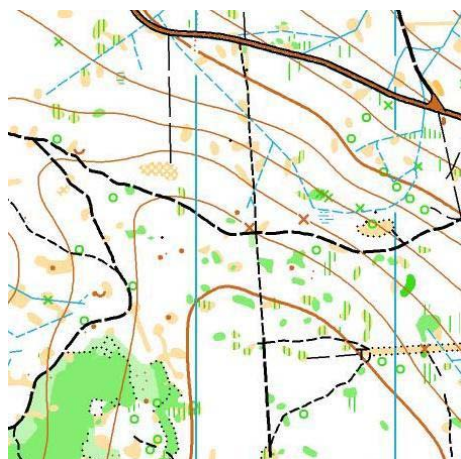
Women (girls) up to 14 (i.e., born 1999+); team consists of up to five competitors.

Terrain characteristics, clothing, weather:

Terrain is only slightly undulating with alternating continuous and dense forest which is interwoven with a dense network of paths of varying quality. Numerous wetlands are present during this time of the year. Running in terrain requires increased effort. There is no restriction on the type of footwear or clothing, however, covering elbows and knees is highly recommended. Weather is often changing in this season, rain should be expected.

Maps:

IOF standard, 1:15 000 (1:5 000 for sprint), contour interval 5 m, size A4, status: spring 2013.



Embargoed areas:

The area within 15 km of the town of Nové Město na Moravě is prohibited for any ARDF and orienteering activity or training purposes.

Training:

Training for both bands will be arranged on the day of arrival. After the first competition, sprint training (full scope model competition) will take place in the event center. For those willing to attend some of the Czech national competitions, please, refer to Czech ARDF webpage (<http://ardf.cz>) for more information.

Marking device:

SportIdent system will be used. SI card numbers will be collected in the entry form. For those who do not have any in their possession, SI card will be provided.

Awards:

Medals & diplomas.

Technical parameters of the equipment:

144 MHz transmitters:

- RF power 3 W PEP,
- frequency: Tx 1–5: MOE–MO5 144.50 MHz, finish beacon: MO 144.85 MHz,
- antenna: crossed dipoles 3 m above the ground level.

3.5 MHz transmitters:

- RF power 3 W,
- frequency: Tx 1–5: MOE–MO5 3.52 MHz, finish beacon: MO 3.58 MHz,
- antenna: 8 m vertical + 8 m counterpoise.

3.5 MHz transmitters for sprint (1 minute cycle – 12 sec:48 sec)

- RF power: 1 W,
- antenna: 8m vertical + 8 m single radial counterpoise,
- frequency: Tx 1–5: MOE–MO5 (50 PARIS) 3.52 MHz
spectators control : S 3.54 MHz
Tx 1F–5F: MOE–MO5 (70 PARIS) 3.56 MHz
finish beacon: MO 3.58 MHz.

Insurance & Medical Care:

First aid facility will be available at the finish areas for all competitions. No cost to the participant applies for on-site minor treatment; however the cost for ambulance transportation, emergency department visits, and clinic visits will be the participant's responsibility. Thus, we recommend you to obtain an insurance covering such expenses.

Visa:

The Czech Republic is a part of the Schengen area, thus, most of the countries do not need an entry permit. For those who need visa, we will prepare invitation letters upon request. If you are not sure, check on the web page of Ministry of Foreign Affairs:

http://www.mzv.cz/jnp/en/information_for_alien/index.html

Transportation:

We are able to arrange transport of participants, e.g., from Vienna or Prague international airports upon request for reasonable price. Such request shall be send to organizers well in advance, certainly not later than three weeks before event.

Fees (if paid before May 6, 2013):

Competitors–full package: 5 400 CZK (approx. 210 EUR).

Team officials–full package: 5 400 CZK (approx. 210 EUR).

Visitors–full package: 3 200 CZK (approx. 128 EUR).

Full package consists of accommodation, full board, closing party & hamfest, particular transportation. There is no limit on the number of team officials per team. Visitors are not part of the national teams, e.g., do not have an access to start area, cannot attend Jury/team leaders meetings, do not receive Certificate of participation, maps, etc.

Entries:

For all participants (competitors, team officials, visitors): full names number, passport or ID card number (for visa and accommodation/registration purposes). For competitors, categories and SI card ID must be included as well.

For teams: details of team's arrival, contact person and his cell-phone and email.

Payment:

Wire transfer to the account:

Beneficiary: Asociace rádiového orientačního běhu ČR
Bank: GE Money CZ
BIC: AGBACZPP
IBAN: CZ68 0600 0000 0001 5498 8883

Transfers shall be carried in CZK.

Deadlines:

Entries: May 6, 2013.

Fee payment: May 6, 2013. **(20% fine applies for late fee payment.)**

Contact:

EYAC 2013 organizing committee:

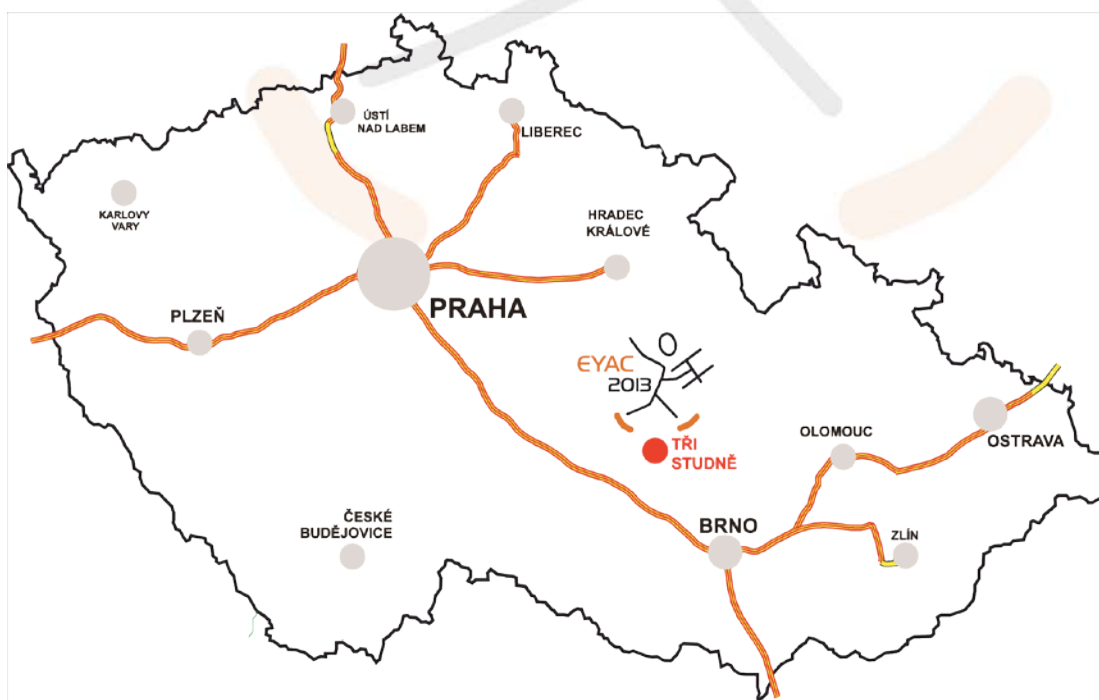
Cuřekceg" TQD" T
Zátokova 100/2
P.O. Box 40
Prague 6 – Strahov
CZ-16017
Czech Republic

email: info@eyac2013.com

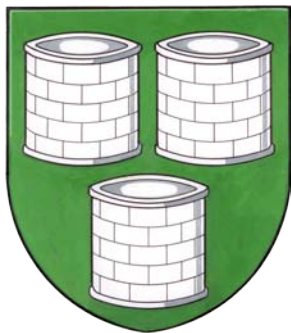
web: <http://www.eyac2013.com>

phone: +420 606 910 196

Map:



Partners:



Tři Studně

SVAZEK OBCÍ



MIKROREGION
NOVOMĚSTSKO

